



The Ceredigion Road Book

Trevor Fairbanks

July 2019

Introduction

The suggested 25 landmarks in this Ceredigion road book have been chosen to maximise coverage of Ceredigion and its roads. You choose how many landmarks you would like to visit. The number of trips you make, the routes you take and how long you take to visit your chosen landmarks is entirely up to you. There is no time limit or element of competition.

The landmark keys below are intended to provide some information about each landmark. These keys are based on the condition of the landmarks at the time the author visited each of them and may not be applicable when you choose to visit them. If you don't feel comfortable with going to the landmark itself then a photo of something of relevance nearby is fine instead.



Access to and possibly a photograph of the landmark may involve a short walk.



Landmark is located in a built-up area.



Nearby café or eatery.



Other nearby sites of interest.



Public access is restricted to certain times. If closed it will be necessary to photograph something of relevance nearby.



Access to landmark is via roads with poor surfaces and /or narrow winding roads.



Click on this (hyperlink) for landmark information.

One final thing, the author accepts no liability for you visiting any of the suggested landmarks in this road book. The author has visited each landmark in this road book and all can be photographed by the general public without the need to break any laws.

Trevor Fairbanks July 2019

ABERPORTH DOLPHIN

52.13458, -4.54656



BWLCH NANT YR ARIAN

52.41487, -3.88568



CARDIGAN CASTLE

52.08025, -4.66111



CWMTYDU

52.19142, -4.40663



DERRY ORMOND TOWER

52.14767, -4.06335



DEVIL'S BRIDGE

52.37683, -3.85071



DISUSED MINES, CWMYSTWYTH

52.35548, -3.75956



DYFI FURNACE

52.53830, -3.94040



JUBILEE PLANTATION

52.16452, -3.77810



LLANDEWI BREFI AA SIGN

52.17940, -3.95908



LLYN TEIFI

52.29808, -3.78113



MYNYDD BACH

52.29107, -4.04180



NAT Y MOCH RESERVOIR

52.45969, -3.83466



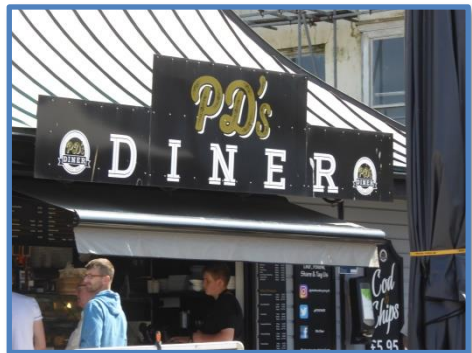
NEWCASTLE EMLYN CASTLE

52.03914, -4.46499



PD'S DINER, ABERYSTWYTH

52.41743, -4.08447



RHEIDOL POWER STATION

52.39629, -3.89982



ROADSIDE SCULPTURES, NEAR PENUWCH

52.24783, -4.03797



ST. CRANNOG, LLANGRANNOG

52.16009, -4.47308



STRATA FLORIDA ABBEY

52.27540, -3.83854



TEIFI ESTUARY

52.11135, -4.68425



THE ARCH

52.36420, -3.81490



TEIFI RIVER, CILGERRAN

52.05554, -4.63025



WATERWHEEL, PONT-RHYD-Y-GROES

52.33360, -3.85311



WELSH COB STALLION, ABERAERON

52.24152, -4.25693



YNYSLAS

52.52695, -4.05125

